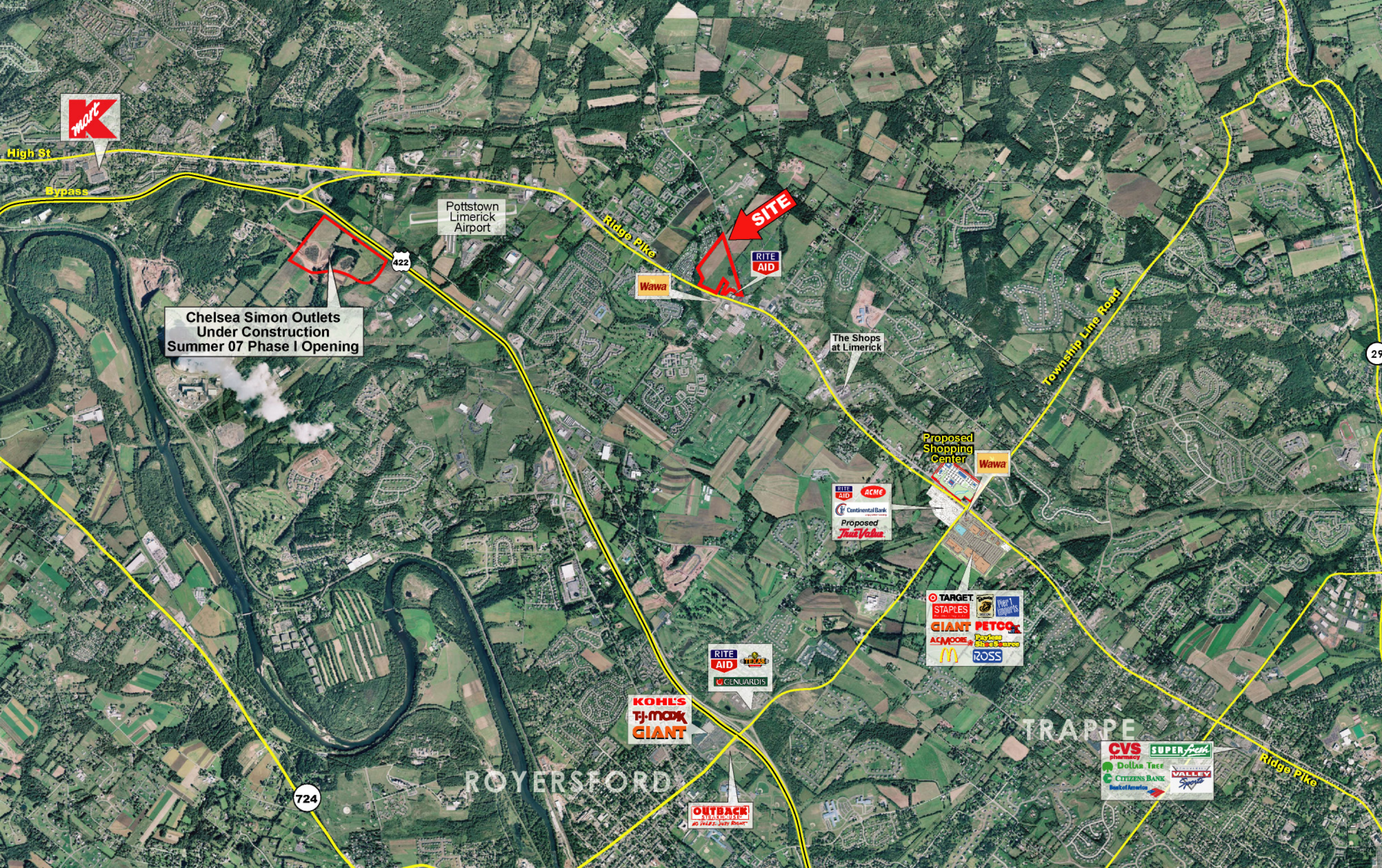


ARCADIA AT  
LIMERICK POINTE  
DECEMBER 15, 2016

4 Story  
177,122 S.F.  
MC = 32  
PC = 41  
IL = 87







High St

Bypass

Pottstown Limerick Airport

422

Chelsea Simon Outlets Under Construction Summer 07 Phase I Opening

Ridge Pike



The Shops at Limerick

Township Line Road

Proposed Shopping Center



724

ROYERSFORD

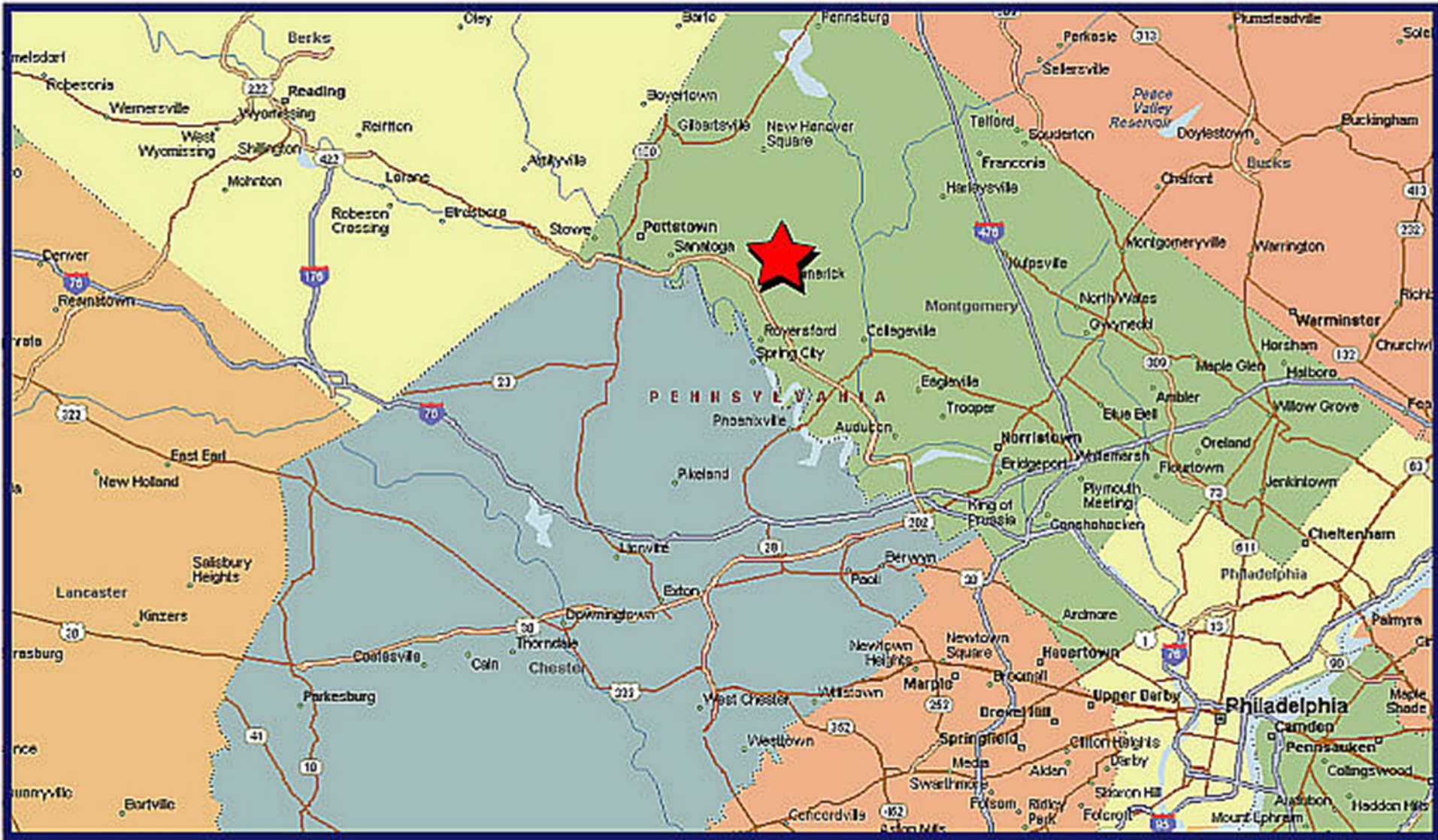
TRAPPE



Ridge Pike

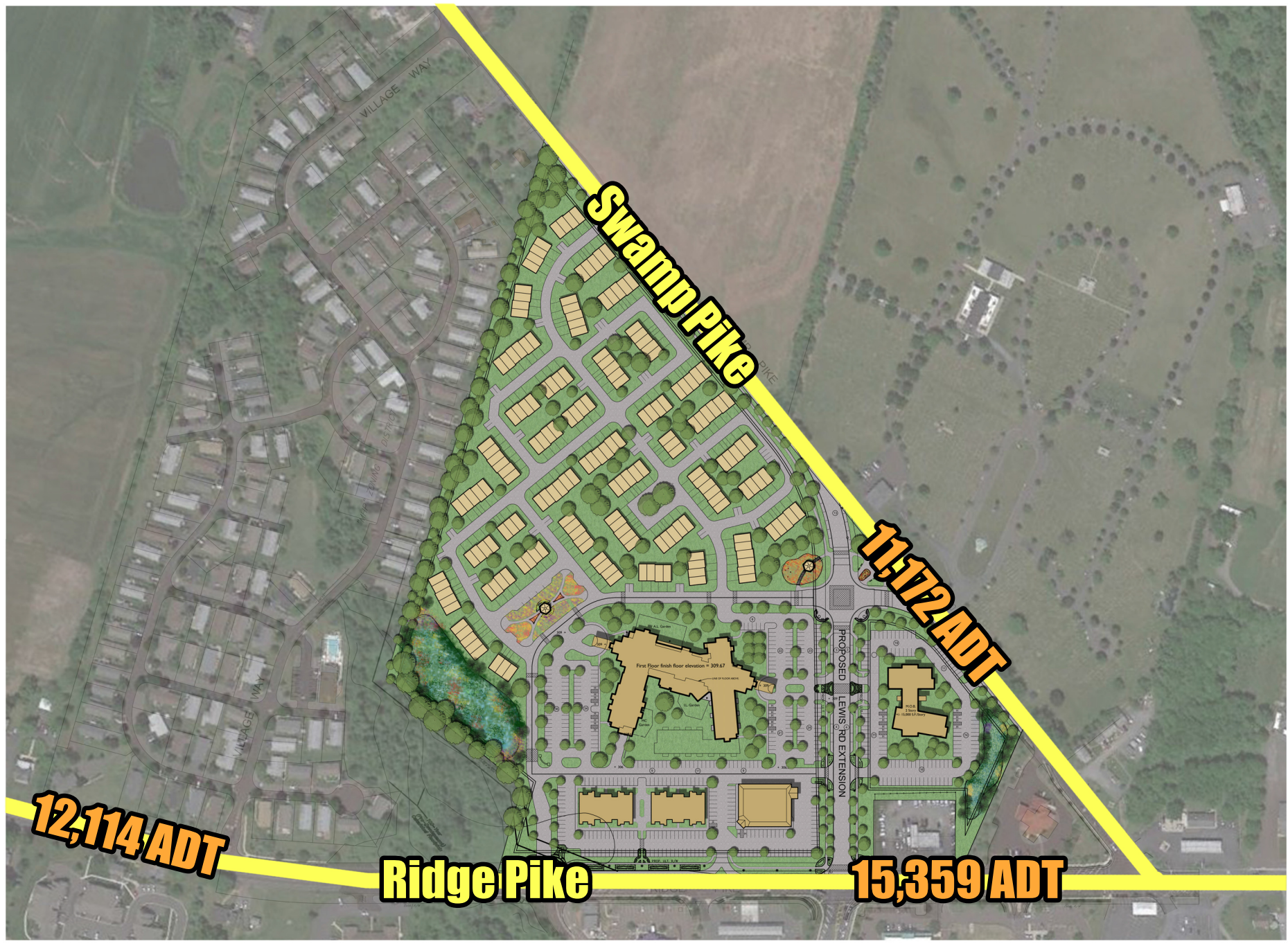
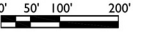
29





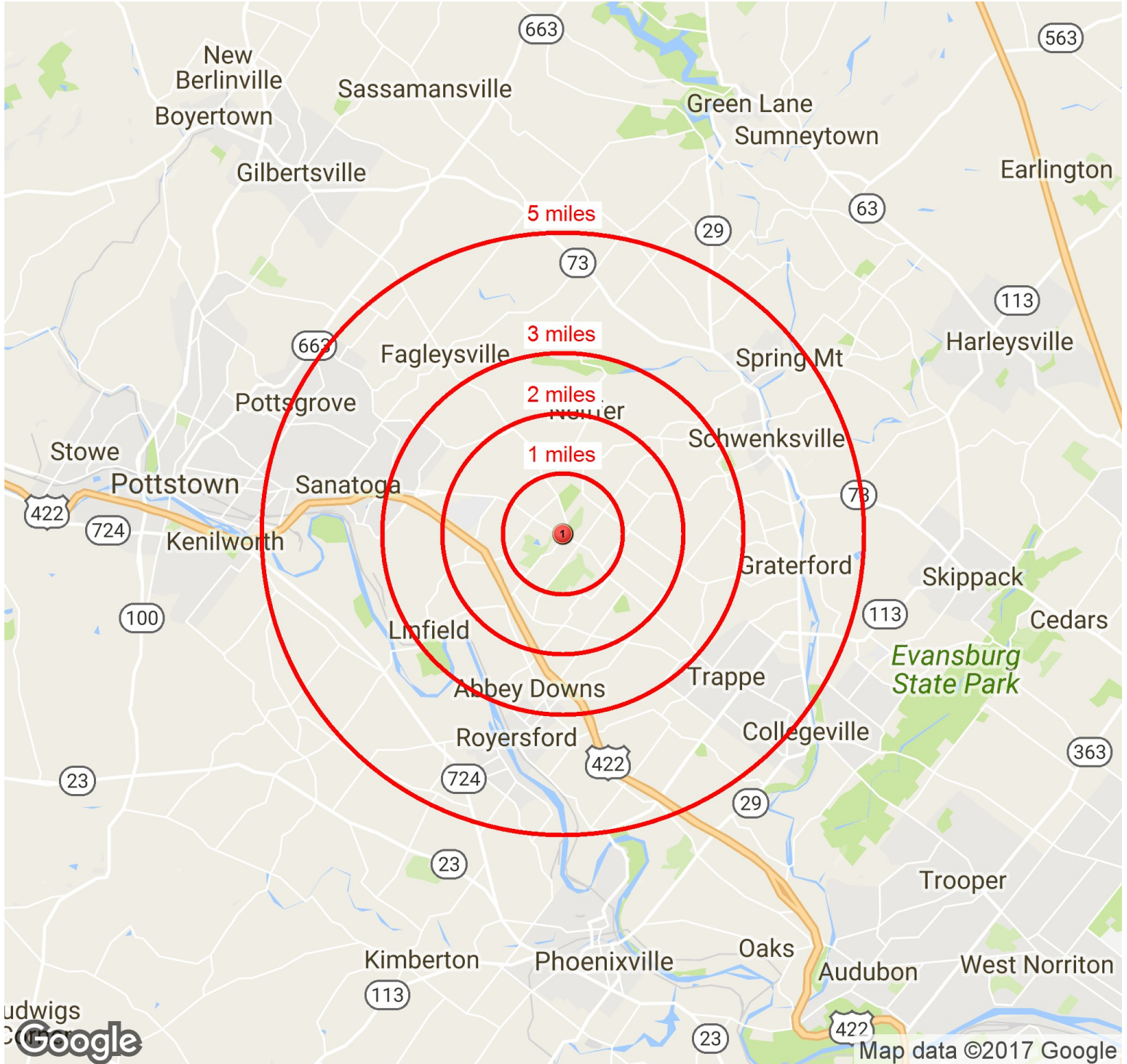


4 Story  
177,122 S.F.  
MC = 32  
PC = 41  
IL = 87





40.233195,-75.527618



NAME	LATITUDE	LONGITUDE
1	40.233195,-75.527618	40.233195 -75.527618

©2017 CBRE. This information has been obtained from sources believed reliable. We have not verified it and make no guarantee, warranty or representation about it. Any projections, opinions, assumptions or estimates used are for example only and do not represent the current or future performance of the property. You and your advisors should conduct a careful, independent investigation of the property to determine to your satisfaction the suitability of the property for your needs. Source: Esri ProjectID:193314



40.233195,-75.527618

### PLACE OF WORK

	1 MILE	2 MILES	3 MILES	5 MILES
2016 Businesses	209	686	1,300	2,956
2016 Employees	2,205	7,816	14,551	33,647

### POPULATION

	1 MILE	2 MILES	3 MILES	5 MILES
2016 Population - Current Year Estimate	5,528	10,828	25,578	90,315
2021 Population - Five Year Projection	5,654	11,038	26,265	93,378
2010 Population - Census	5,399	10,620	24,380	86,680
2000 Population - Census	4,216	7,929	18,593	71,215
2010-2016 Annual Population Growth Rate	0.38%	0.31%	0.77%	0.66%
2016-2021 Annual Population Growth Rate	0.45%	0.38%	0.53%	0.67%

### AGE

2016 Population	5,528		10,828		25,578		90,315	
Age 0-4	331	6.0%	661	6.1%	1,556	6.1%	5,622	6.2%
Age 5-9	382	6.9%	786	7.3%	1,867	7.3%	6,509	7.2%
Age 10-14	412	7.5%	905	8.4%	2,182	8.5%	7,006	7.8%
Age 15-19	344	6.2%	731	6.8%	1,737	6.8%	6,388	7.1%
Age 20-24	254	4.6%	498	4.6%	1,181	4.6%	5,263	5.8%
Age 25-29	231	4.2%	480	4.4%	1,174	4.6%	4,442	4.9%
Age 30-34	295	5.3%	554	5.1%	1,368	5.3%	5,188	5.7%
Age 35-39	384	6.9%	711	6.6%	1,676	6.6%	5,907	6.5%
Age 40-44	466	8.4%	919	8.5%	2,144	8.4%	6,934	7.7%
Age 45-49	507	9.2%	1,003	9.3%	2,287	8.9%	7,225	8.0%
Age 50-54	433	7.8%	905	8.4%	2,147	8.4%	6,979	7.7%
Age 55-59	361	6.5%	730	6.7%	1,769	6.9%	6,105	6.8%
Age 60-64	289	5.2%	558	5.2%	1,346	5.3%	4,739	5.2%
Age 65-69	250	4.5%	447	4.1%	1,057	4.1%	3,890	4.3%
Age 70-74	211	3.8%	350	3.2%	788	3.1%	2,777	3.1%
Age 75-79	150	2.7%	243	2.2%	544	2.1%	1,960	2.2%
Age 80-84	131	2.4%	198	1.8%	403	1.6%	1,487	1.6%
Age 85 and Older	97	1.8%	150	1.4%	351	1.4%	1,896	2.1%
2016 Median Age	41.4		40.5		40.1		39.0	

### RACE AND ETHNICITY

2016 Population	5,528		10,828		25,578		90,315	
White	4,937	89.3%	9,725	89.8%	22,733	88.9%	79,747	88.3%
Black or African American	272	4.9%	453	4.2%	1,055	4.1%	4,443	4.9%
Asian	208	3.8%	422	3.9%	1,147	4.5%	3,417	3.8%
American Indian or Alaska Native	4	0.1%	9	0.1%	27	0.1%	119	0.1%
Pacific Islander	3	0.1%	5	0.0%	10	0.0%	42	0.0%
Other Race	21	0.4%	50	0.5%	140	0.5%	610	0.7%
Two or More Races	82	1.5%	164	1.5%	465	1.8%	1,936	2.1%
Hispanic	115	2.1%	231	2.1%	642	2.5%	2,750	3.0%
White Non-Hispanic	4,853	87.8%	9,563	88.3%	22,286	87.1%	77,971	86.3%

©2017 CBRE. This information has been obtained from sources believed reliable. We have not verified it and make no guarantee, warranty or representation about it. Any projections, opinions, assumptions or estimates used are for example only and do not represent the current or future performance of the property. You and your advisors should conduct a careful, independent investigation of the property to determine to your satisfaction the suitability of the property for your needs. Source: Esri Page 1 ProjectID:193314





40.233195,-75.527618


	1 MILE	2 MILES	3 MILES	5 MILES
<b>EDUCATION</b>				
<b>2016 Population 25 and Over</b>	<b>3,806</b>	<b>7,248</b>	<b>17,055</b>	<b>59,527</b>
Less than 9th Grade	24 0.6%	85 1.2%	210 1.2%	864 1.5%
9-12th Grade - No Diploma	89 2.3%	238 3.3%	590 3.5%	2,396 4.0%
High School Diploma	825 21.7%	1,541 21.3%	3,641 21.3%	15,407 25.9%
GED or Alternative Credential	79 2.1%	120 1.7%	236 1.4%	1,253 2.1%
Some College - No Degree	751 19.7%	1,315 18.1%	2,955 17.3%	10,015 16.8%
Associate`s Degree	312 8.2%	655 9.0%	1,738 10.2%	4,716 7.9%
Bachelor`s Degree	1,111 29.2%	2,152 29.7%	5,058 29.7%	15,982 26.8%
Graduate or Professional Degree	615 16.2%	1,142 15.8%	2,627 15.4%	8,894 14.9%
<b>GENDER</b>				
<b>2016 Population</b>	<b>5,528</b>	<b>10,828</b>	<b>25,578</b>	<b>90,315</b>
Males	2,621 47.4%	5,250 48.5%	12,507 48.9%	44,169 48.9%
Females	2,907 52.6%	5,578 51.5%	13,071 51.1%	46,147 51.1%
<b>MARITAL STATUS</b>				
<b>2016 Population 15+</b>	<b>4,404</b>	<b>8,476</b>	<b>19,972</b>	<b>71,179</b>
Never Married	1,040 23.6%	2,087 24.6%	5,243 26.3%	20,048 28.2%
Married	2,815 63.9%	5,433 64.1%	12,310 61.6%	41,191 57.9%
Widowed	216 4.9%	375 4.4%	913 4.6%	3,646 5.1%
Divorced	333 7.6%	581 6.9%	1,506 7.5%	6,294 8.8%
<b>EMPLOYMENT STATUS</b>				
<b>2016 Civilian Population 16+ in Labor Force</b>	<b>3,159</b>	<b>6,051</b>	<b>14,476</b>	<b>50,470</b>
2016 Employed Civilian Population 16+	3,045 96.4%	5,791 95.7%	13,863 95.8%	47,955 95.0%
2016 Unemployed Population 16+	114 3.6%	260 4.3%	614 4.2%	2,514 5.0%
<b>CLASS OF WORKER</b>				
<b>2016 Employed Civilian Population 16+</b>	<b>3,045</b>	<b>5,791</b>	<b>13,863</b>	<b>47,955</b>
White Collar	2,315 76.0%	4,277 73.9%	10,070 72.6%	34,305 71.5%
Services	282 9.3%	637 11.0%	1,808 13.0%	6,617 13.8%
Blue Collar	448 14.7%	877 15.1%	1,985 14.3%	7,034 14.7%
<b>DAYTIME POPULATION</b>				
<b>2016 Daytime Population</b>	<b>4,290</b>	<b>11,369</b>	<b>24,309</b>	<b>74,420</b>
Daytime Workers	1,748 40.7%	6,221 54.7%	12,333 50.7%	31,178 41.9%
Daytime Residents	2,542 59.3%	5,148 45.3%	11,976 49.3%	43,242 58.1%



40.233195,-75.527618

 HOUSEHOLDS	1 MILE	2 MILES	3 MILES	5 MILES
2016 Households - Current Year Estimate	2,308	4,041	9,377	32,569
2021 Households - Five Year Projection	2,358	4,112	9,585	33,549
2010 Households - Census	2,262	3,983	9,041	31,547
2000 Households - Census	1,737	2,999	6,945	25,881
2010-2016 Annual Household Growth Rate	0.32%	0.23%	0.59%	0.51%
2016-2021 Annual Household Growth Rate	0.43%	0.35%	0.44%	0.59%
2016 Average Household Size	2.40	2.68	2.73	2.70

 HOUSEHOLD INCOME	1 MILE		2 MILES		3 MILES		5 MILES	
<b>2016 Households</b>	<b>2,308</b>		<b>4,041</b>		<b>9,377</b>		<b>32,568</b>	
Under \$15,000	129	5.6%	212	5.2%	461	4.9%	1,813	5.6%
\$15,000-\$24,999	138	6.0%	256	6.3%	579	6.2%	2,039	6.3%
\$25,000-\$34,999	164	7.1%	254	6.3%	608	6.5%	2,180	6.7%
\$35,000-\$49,999	187	8.1%	319	7.9%	748	8.0%	2,873	8.8%
\$50,000-\$74,999	322	14.0%	597	14.8%	1,372	14.6%	4,888	15.0%
\$75,000-\$99,999	364	15.8%	587	14.5%	1,333	14.2%	5,119	15.7%
\$100,000-\$149,999	594	25.7%	956	23.7%	2,171	23.2%	7,495	23.0%
\$150,000-\$199,999	252	10.9%	549	13.6%	1,233	13.1%	3,525	10.8%
\$200,000 and Over	157	6.8%	312	7.7%	872	9.3%	2,637	8.1%
2016 Average Household Income	\$101,504		\$105,440		\$108,851		\$102,722	
2021 Average Household Income	\$112,095		\$116,210		\$118,975		\$112,092	
2016 Median Household Income	\$87,818		\$89,642		\$90,698		\$85,298	
2021 Median Household Income	\$100,293		\$102,006		\$102,136		\$95,576	
2016 Per Capita Income	\$40,686		\$39,428		\$39,956		\$37,950	
2021 Per Capita Income	\$44,848		\$43,376		\$43,450		\$41,206	

 HOUSING VALUE	1 MILE		2 MILES		3 MILES		5 MILES	
<b>2016 Owner Occupied Housing Units</b>	<b>1,786</b>		<b>3,195</b>		<b>7,541</b>		<b>25,223</b>	
Under \$50,000	16	0.9%	35	1.1%	114	1.5%	601	2.4%
\$50,000-\$99,999	10	0.6%	20	0.6%	66	0.9%	395	1.6%
\$100,000-\$149,999	50	2.8%	82	2.6%	213	2.8%	1,434	5.7%
\$150,000-\$199,999	144	8.1%	208	6.5%	655	8.7%	3,270	13.0%
\$200,000-\$249,999	448	25.1%	649	20.3%	1,311	17.4%	4,347	17.2%
\$250,000-\$299,999	417	23.3%	574	18.0%	1,116	14.8%	3,895	15.4%
\$300,000-\$399,999	409	22.9%	835	26.1%	1,933	25.6%	5,540	22.0%
\$400,000-\$499,999	158	8.8%	473	14.8%	1,284	17.0%	3,365	13.3%
\$500,000-\$749,999	91	5.1%	226	7.1%	608	8.1%	1,887	7.5%
\$750,000-\$999,999	34	1.9%	78	2.4%	197	2.6%	363	1.4%
\$1,000,000 and Over	9	0.5%	15	0.5%	43	0.6%	126	0.5%
2016 Median Value of Owner Occ. Housing Units	\$276,978		\$303,533		\$315,261		\$282,920	
2016 Average Value of Owner Occ. Housing Units	\$313,662		\$339,984		\$346,340		\$315,311	